



Company Profile

Tice Engineering Incorporated
September 2015

Prepared By:

Tice Engineering Incorporated
510 South Vardaman Street
Wiggins, Mississippi 39577
(601) 928-4121
www.ticeeng.com



TABLE OF CONTENTS

Contact Information	A
Statement of Qualifications	B
What We Can Do	C
Our Experience	D
Your Team	E
Appendices	F

LICENSED PROFESSIONALS

Tice Engineering Incorporated

W. Ryan Tice, P.E.

President

ryan.tice@ticeeng.com

J. Colter Ratliff, P.S.

Vice President/Survey Manager

colt.ratliff@ticeeng.com

Matt Kirkland, E.I.

Engineer Intern

matt.kirkland@ticeeng.com

Matthew Jones, P.S.

Staff Surveyor

matthewjones@ticeeng.com

Michelle Gill, E.I.

Engineer Intern

michelle.gill@ticeeng.com

J. Morgan Rabby

Marketing Director

morgan.rabby@ticeeng.com



@ticeengineering



@ticeengineering



<http://www.ticeeng.com>

Mississippi Location

510 South Vardaman Street
Wiggins, Mississippi 39577

O: (601) 928-4121

F: (601) 928-4131

**Louisiana Location**

1290 Seventh Street
Slidell, Louisiana 70458

O: (985) 242-0601

F: (601) 928-4131



Tice Engineering Incorporated is a multi-disciplined engineering firm that is dedicated to providing quality engineering and surveying services to both private and public entities in virtually every industry and/or governmental system. Tice Engineering was established in 2009, is licensed as a company in Alabama, Louisiana, and Mississippi, and has since proved its professionalism and effectiveness through high-quality performance on a wide variety of projects in a cost-effective manner.

To ensure the best possible quality and service, all projects are managed by our professional team members, which may include the following:

- Professional civil engineers/engineer interns
- Professional surveyors
- A highly-skilled drafting & design team
- A professional administrative staff
- Five fully-equipped survey crews
- An innovative marketing team

Tice Engineering provides services for a variety of clients and projects, ranging in size from small parcels and site plans to large structures and commercial/residential developments. Tice Engineering has the expertise and use of cutting-edge technology to tackle the most demanding projects.

Tice Engineering has vast experience in:

- Transportation
- Civil Site Design
- Construction Engineering & Inspection
- Disaster Recovery
- Environmental
- Individual Parcel Plats
- Legal Descriptions for Various Types of Legal Conveyances
- Acquisition Maps
- Project Property Maps
- As-Built Surveys of Aerial Obstructions/Overhead Utilities
- Field Surveys
- Topographic Surveys
- Hydrographic Surveys
- Eminent Domain Surveys
- Expert Witness Testimony
- Magnetometer Surveys
- Bathymetric Surveys
- Multibeam Surveys
- Surveys for As-Build Construction & Right-of-Way
- Dredge Support Surveys

Our firm is capable of providing sound engineering and surveying services for all types of needs within the civil engineering and surveying professions. These include the following:

Civil Site Design

- Subdivisions
- Site Plans
- Master Planning
- Water / Sewer Design
- Drainage
- Pump Stations

Environmental

- Storm Water Management
- Storm Water Pollution Prevention Management
- Environmental Inspections

Transportation

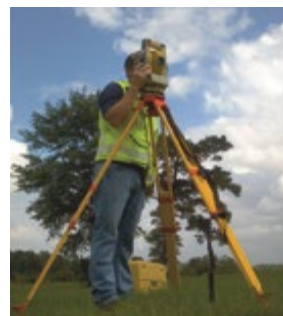
- Roadway Design
- Conceptual Plans
- Parking Lot Design
- Right-of-Way Plans
- Traffic Impact Studies
- Traffic Signal Design
- Multi Use Pathways

Surveying

- Boundary
- Route
- Topographic
- Dredge Support
- Hydrographic
- ALTA / ACSM
- Construction Staking

Construction Engineering & Inspection

- RPR - Resident Project Representation
- CA - Construction Administration



SURVEYING

CLIENT	PROJECT DESCRIPTION	LOCATION
MDOT Master Contract (3 years)	Survey: MDOT projects throughout the state	Mississippi statewide
MDOT	Topographic Survey: Hall Street for construction and design of new intersection with US Highway 49	Stone County, MS
MDOT	Topographic Survey: US Highway 90 at Bouslog Street for construction and design of a new traffic signal	Hancock County, MS
MDOT	Topographic Survey: Mississippi Highway 67 for construction and design of a new traffic signal at Licksillet Road	Harrison County, MS
MDOT	Topographic and Boundary Survey: Realignment and signalization of Mississippi Highway 42 and U.S. Highway 49	Hattiesburg, MS
MDOT	Topographic and Boundary Survey: Mississippi Highway 570 traffic signal upgrades at seven (7) different intersections	McComb, MS
MPC	New Construction: 12 miles of new transmission line serving Plant Ratcliffe	Kemper County, MS
HCUA	Parcel Acquisition: Acquisition surveys for parcels for utility lines	Harrison County, MS
Pickering Firm, Inc.	Topographic Survey: Approximately two miles of Woolmarket Road and several side roads for the City of Biloxi sewer expansion	Harrison County, MS
Weeks Marine, Inc.	Hydrographic, Magnetometer, and Dredge Support Survey: Material dredged from the Mississippi River will be pumped 10 miles via pipeline route and a 617-acre marsh creation area will be created	Jefferson and Plaquemines Parishes, LA
Glass, Inc.	Construction staking services on an as-needed basis, which includes but is not limited to the 6th, 7th, and 8th floor column lines for the Memorial Hospital at the Gulfport Main Patient Tower Expansion	Gulfport, MS
Oscar Renda Contracting	Construction staking services for the "City of Biloxi - The North Contract" for the entire project and finalize completed As-Builds/Record Drawings	Biloxi, MS
Mendrop Engineering Resources, LLC & MDOT	Hydrographic and Topographic surveying of the adjoining upland of the Chickasawhay River	Greene County, MS
Miller Enterprises, LLC	Surface preparation for machine-controlled data files and construction staking on drainage	Saucier, MS
Mendrop Engineering Resources, LLC	Hydrographic and topographic surveying of the Pearl River for the US 98/SR 35 Pearl River Drift Issues Stream Stability Study and Countermeasure Design	Marion County, MS
Pickering Firm, Inc.	Topographic survey on a parcel of land located in the Northwest quarter of the Northwest quarter of Section 12, Township 8 South, Range 15 West	Hancock County, MS
United States Navy / Tetra Tech, Inc.	Survey: Site 7 - Naval Construction Battalion Center Gulfport	Gulfport, MS

Erosion Control Inspections

CLIENT	PROJECT DESCRIPTION	LOCATION
MPC	Environmental Inspections: Weekly inspections and reporting for 148 miles of new construction to service Plant Ratcliffe	Kemper County, MS Lauderdale County, MS Jasper County, MS
Coleman Hammons	Environmental Inspections: Weekly inspection and reporting for six miles of the PRVWSD Pedestrian Trail	Rankin County, MS
Sullivan Enterprises	Environmental Inspections: Weekly inspection and reporting for the Chain Park Pedestrian Pathway	Forrest County, MS
Jordan Crane Services	Environmental Inspections: Weekly inspection and reporting for the Klondyke Road Bridge Replacement	Harrison County, MS
Neel-Schaffer, Inc.	Erosion Control Design: 10 miles of new four-lane highway at the US Highway 45 Columbus bypass	Lowndes County, MS

Civil Site Design

CLIENT	PROJECT DESCRIPTION	LOCATION
Wiggins Development Group, LLC	Design, Construction Engineering & Inspection, Survey: Commercial Building Development for CSPIRE Wireless	Wiggins, MS
Clearwater Paper	Survey, Design: Utility Relocation	Wiggins, MS
Cornerstone LLC	Survey, Design: Wiggins Plaza Commercial Development	Wiggins, MS
Mason Trendsetters	Design: South Breeze Subdivision, Phase II	Ocean Springs, MS
Mississippi Power Company	Design: Truck Bay Building	Wiggins, MS
Wiggins Development Group, LLC	Design, Construction Engineering & Inspection, Survey: Commercial Building Development	Columbia, MS
USM Gulf Park Campus	Design, Survey, Bid, and Construction Inspection: Three parking lots	Long Beach, MS

CDBG

CLIENT	PROJECT DESCRIPTION	LOCATION	CONSTRUCTION COST
SCUA	Preliminary Design, CEO, Permitting: 7 miles of force main and four pumping stations	Perkinston Extension Stone County, MS	\$3,200,000
SCUA	CEI: 14 miles of water main	W-10 Stone County, MS	\$2,600,000
SCUA	CEI: 3 500 GPM Wells As-Builds	W-10 Stone County, MS	\$1,800,000
SCUA	CEI: 1 MGD Zero Discharge WWTF	S-8 Stone County, MS	\$6,500,000
SCUA	CEI: 0.75 MGD Mechanical WWTF	S-9 Stone County, MS	\$9,200,000
SCUA	Design ,CEI, Permitting: five miles of force main and three pumping stations	East Lagoon Stone County, MS	\$3,000,000
City of Wiggins	CEI: Street Rehabilitation of Pine Avenue	Wiggins, MS	\$1,000,000
City of Wiggins	CEI: Reynolds Field Recreational Sports Complex	Wiggins, MS	\$1,400,000
City of Sardis	Survey, Design, CEI: Children's' Park and Pathway	Self Help Grant Sardis, MS	\$115,000

Reference list of acronyms:

HCUA: Harrison County Utility Authority

MDOT: Mississippi Department of Transportation

PHWD: Pat Harrison Waterway District

SCEDP: Stone County Economic Development Partnership

TRANSPORTATION

CLIENT	PROJECT DESCRIPTION	LOCATION	CONSTRUCTION COST
City of Wiggins	Design, CEI: Multi-use pathway	LPA Project Wiggins, MS	\$500,000
Dunn Paper (Clearwater Paper)	Survey, Design: Parking lot and truck access road improvements	Wiggins, MS	\$400,000
Coahoma County	Survey, Design, CEI: Historic Yazoo Pass Pedestrian Pathway	LPA Project Coahoma County, MS	\$662,500
Coahoma County	Survey, Design, CEI: Moon Lake Scenic Overview	LPA Project Coahoma County, MS	\$427,500
MDOT Master Contract	Design: Traffic engineering projects	Mississippi Statewide	Per Work Assignment
MDOT	Traffic Study: US Highway 49 and Hall Street Inspection	Stone County, MS	N/A
MDOT	Design: US Hwy 49 at Hall Street Improvements/US Hwy 49 at Magnolia Drive Traffic Signal	Stone County, MS	\$1,000,000
MDOT	Design: US Highway 45 Columbia bypass drainage and erosion control plans	Lowndes County, MS	TBD
MDOT	Design: Mississippi Highway 25 traffic signal upgrade	Rankin County, MS	\$60,000
MDOT	Design: MS Highway 67 at Licksillet Road traffic signal design	Harrison County, MS	\$135,000
MDOT	Design: Interstate 10 Exit 61 and Gautier/Vancleave road traffic signal	Jackson County, MS	\$1,250,000
MDOT	Design: US Highway 49 at Pearl River Community College traffic signal design	Forrest County, MS	\$125,000
MDOT	Design: Mississippi Highway 15 at Parker Drive traffic signal installation	Jones County, MS	\$135,000
MDOT	Design: US Highway 90 at Bouslog Street traffic signal design	Hancock County, MS	\$200,000
MDOT	Design: MS Highway 53 at Canal Road and County Farm Road traffic signal installations	Harrison County, MS	\$275,000
SCEDP / PHWD	Survey, Design: Multi-Use Pathway	Flint Creek Water Park Wiggins, MS	\$65,000
University of Southern Mississippi	Survey, Design, CEI: Elizabeth Hall and Beach Park Place parking areas	Long Beach, MS	\$195,000
Pat Harrison Waterway District	Survey, Design, CEI: Asphalt Overlay	Flint Creek Water Park Wiggins, MS	\$125,000

PROJECT HIGHLIGHT



Client: Oscar Renda Contracting

Project Name: City of Biloxi "North Contract"

Work Completion: TBA

This three-year contract represents the bulk city's \$355 million Restore Biloxi Infrastructure Repair Program. This project is a significant water, sewer, and storm drain improvement project. The "North Contract" takes place mainly in areas north of the CSX railway from Forrest Avenue to the tip of Point Cadet. The project includes the replacement of the water mains, sanitary sewer lines, and storm drains as well as the streets, curbs, and sidewalks impacted by the construction work. The project also includes eight pump stations that will be eliminated, a new pump station that will be constructed, and one pump station that will be rehabilitated. Tice Engineering was selected by Oscar Renda Contracting to provide professional surveying services for the project.

Project scope of work includes:

- Construction staking for the entire project and finalize completed "As-Built" Record Drawings
- Staking manholes
- Curbs and gutters
- Staking of fire hydrants and drainage structures
- Staking of sidewalks and fencing

PROJECT HIGHLIGHT



Client: Weeks Marine Incorporated

Project Name: Mississippi River Long Distance Sediment Pipeline and Bayou Dupont Marsh and Ridge Creation

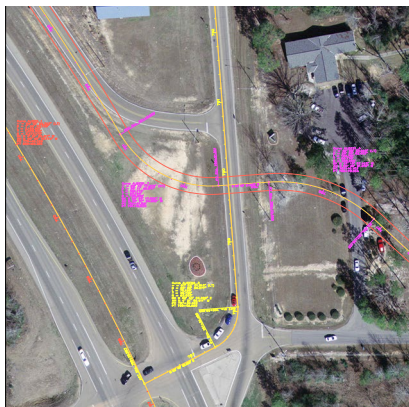
Work Completion: TBA

Tice Engineering was selected by Weeks Marine, Inc. to perform all pre and post-construction surveying procedures for the Mississippi River Long Distance Sediment Pipeline and Bayou Dupont Marsh and Ridge Creation project. Approximately five million cubic yards of material will be dredged from the Mississippi River and pumped through a 10-mile, 36-inch pipeline to fill 617 acres of marsh.

Project scope of work includes:

- Topographic survey of the marsh creation area and containment dykes.
- Construction staking for the containment dykes, pipeline routes, and marsh creation area.
- Magnetometer surveys for the borrow area, pipeline route, containment dykes, and marsh creation area.

PROJECT PORTFOLIO



Client: Mississippi Department of Transportation
Project Name: US Hwy 49 at Hall Street/MS Hwy 49 at Magnolia Drive
Work Completion: 2015

Tice Engineering Incorporated was hired under an engineering services master contract with Mississippi Department of Transportation to provide preliminary and final construction plans including survey for the installation of a fully-actuated traffic signal with geometric improvements for the intersection of US Hwy 49 and Hall Street and US Hwy 49 and Magnolia in Stone County, Mississippi.

Scope of work included: Project Reporting/Communication/Meetings, Develop and Conduct Project Work Plan, Develop Quality Control Plan, Topographic Survey, As-Built Plan Review, Geometric Improvements and Traffic Signal Design for US Highway 49 at Hall Street, US Highway 49 at Wal-Mart, and SR149 at Proposed Truck Entrance Dunn Papter (formerly Clearwater Paper), Preliminary Plans and Field Review, and Final Plans and Office Review.

PROJECT PORTFOLIO



Client: University of Southern Mississippi Gulf Park Campus

Project Name: Parking Lot Design Elizabeth Hall

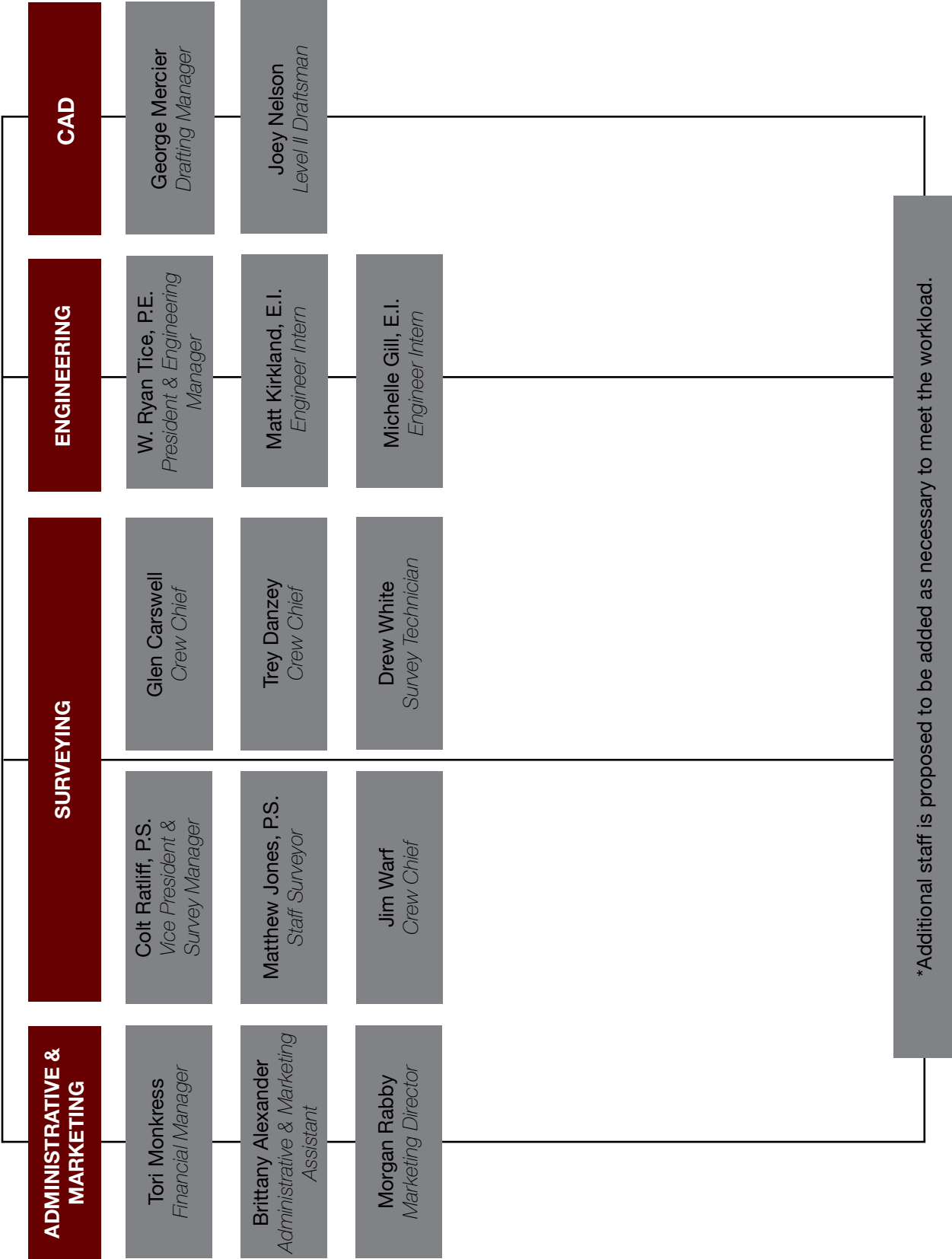
Work Completion: September 2014

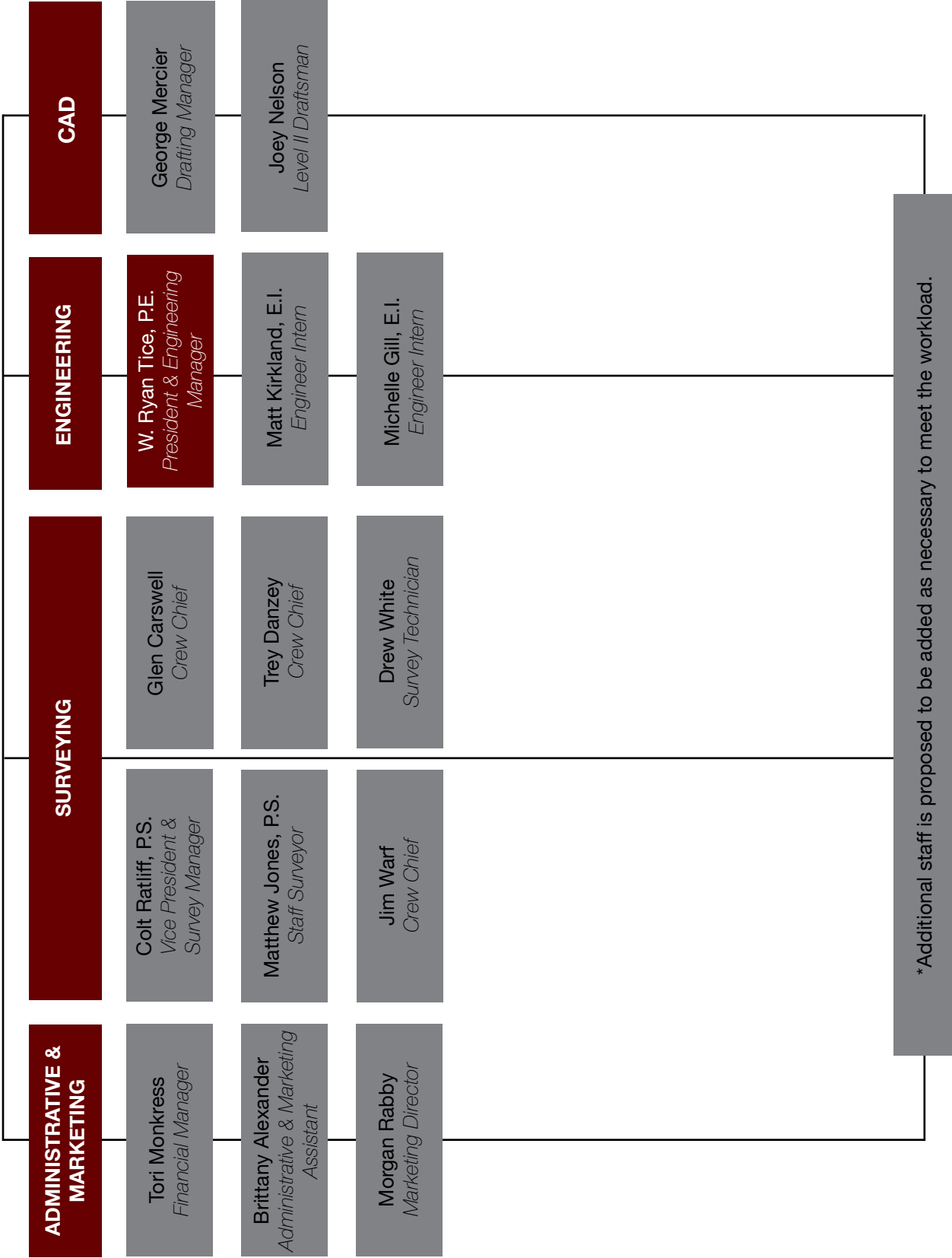
v

Tice Engineering Incorporated was selected by the University of Southern Mississippi Gulf Park Campus Architect to provide professional engineering services to construct two parking lots along Beach Park Place.

Project amenities included:

- Boundary and Topographic Survey
- Conceptual parking lot design
- Conceptual drainage and grading plan
- Opinion of probable cost
- Utility relocation
- Demolition plan
- Parking lot design
- Erosion control, drainage, and grading plan
- Sidewalk plan
- Lighting plan





W. Ryan Tice, P.E.

Registration	Professional Engineer: Mississippi License Number 15169 Louisiana License Number 38257 Alabama License Number 33877	
Professional Affiliations	Mississippi Engineering Society (MES) Deep South Institute of Transportation Engineers (DSITE) American Council of Engineering Companies (ACEC)	
Education	Bachelor of Science in Civil Engineering <i>Mississippi State University</i>	1996
Professional History	President <i>Tice Engineering Incorporated, Wiggins, Mississippi</i>	March 2009 - present
	Project Manager <i>Neel-Schaffer, Wiggins, Mississippi</i>	April 2006 - March 2009
	Project Manager <i>Neel-Schaffer, Biloxi, Mississippi</i>	December 2004 - March 2006
	Project Manager <i>Neel-Schaffer, Jackson, Mississippi</i>	March 1998 - December 2004
	Engineer Intern <i>Mississippi Department of Transportation, Jackson, Mississippi</i>	June 1996 - March 1998
Professional Experience	<i>Project Manager, Pat Harrison Waterway District, Stone County, Mississippi</i> Project Manager for the 910 foot expansion of the bicycle/ pedestrian pathway to connect the Flint Creek Water Park with Downtown Wiggins. Project services included preparation of preliminary and final design plans and construction engineering and inspection services for the 10 foot wide concrete riding surface, drainage, and landscaping. <i>Project Manager, City of Wiggins, Stone County, Mississippi</i> Project Manager for the .75-mile bicycle/pedestrian pathway. Project services included preparation of preliminary and final design plans and construction engineering and inspection services for the 8' and 10' wide concrete riding surface, drainage, landscaping, and new curb and gutters. <i>Project Manager, City of Wiggins, Stone County, Mississippi</i> Project Manager for the Pine Avenue Rehabilitation project in Downtown Wiggins. Project services included preparation of preliminary and final plans and construction engineering inspection services for new subsurface drainage, curb and gutters, replacement of brick riding surface, sidewalks, landscaping and street music. <i>Project Manager, Coahoma County, Clarksdale, Mississippi</i> Project Manager for the Historic Yazoo Pass Pedestrian Pathway project. Project services include preparation of preliminary and final plans and construction engineering and inspection services for 12,355 feet of sidewalk to connect to the Historic Moon Lake to the Mississippi Welcome Center.	



J. Colter Ratliff, P.S.

Registration

Professional Surveyor:
Mississippi License Number 3008
Louisiana License Number 5100
Alabama License Number 31575
Arkansas License Number 1753

Professional Affiliations

National Society of Professional Surveyors
Mississippi Association of Professional Surveyors
Alabama Board of Licensure for Professional Engineers & Land Surveyors
Louisiana Professional Engineering and Land Surveying Board
Mississippi Board of Licensure for Professional Engineers & Surveyors

Education

Bachelor of Science in College of Agriculture 2002
Mississippi State University

Professional History

Vice President / Survey Manager June 2012 - present
Tice Engineering Incorporated, Wiggins, Mississippi

Professional Supervisory Surveyor March 2010 - May 2012
Knesal Engineering Services Incorporated, Gulfport, Mississippi

Professional Surveyor January 2006 - March 2010
Knesal Engineering Services Incorporated, Gulfport, Mississippi

Party Chief August 2003 - January 2006
Knesal Engineering Services Incorporated, Gulfport, Mississippi

Professional Experience

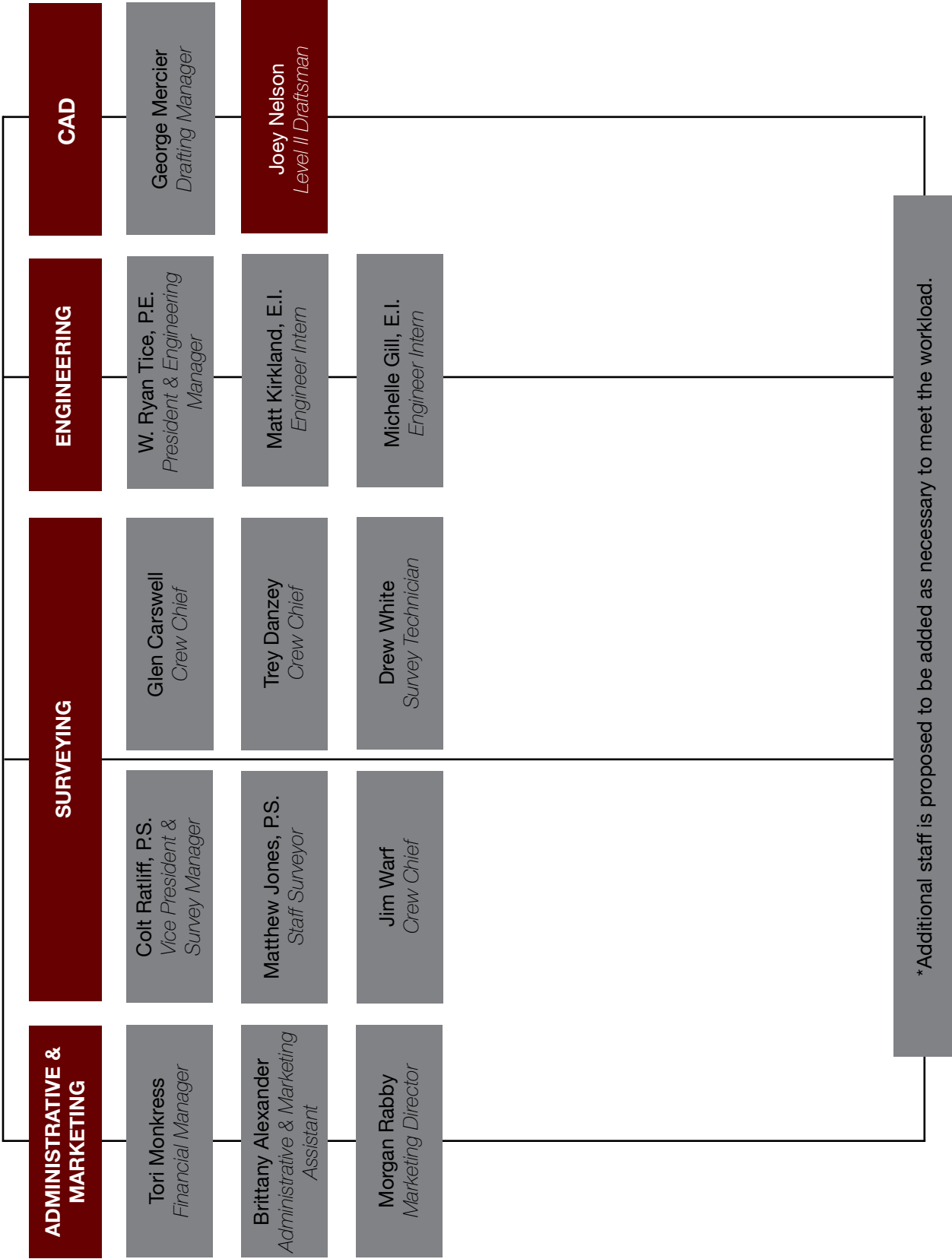
Professional Surveyor, Pickering Firm Incorporated, Biloxi, Mississippi
Professional surveyor for an approximate two-mile topographic survey consisting of Woolmarket Road and several side roads. The survey included locating all utilities, above ground features, and finish floor elevations for all homes and businesses along the route. All features were drafted and an Auto CAD file was produced for design purposes.

Professional Surveyor / Project Manager, Weeks Marine, Jefferson and Plaquemines Parishes, Louisiana
Professional surveyor and project manager responsible for field crew management, project deliverables, and client correspondence. The project consists of hydrographic surveying in the Mississippi river, approximately a 10-mile pipeline, and a 617-acre marsh creation area.

Mississippi Power Company, Kemper County, Mississippi
Prepared acquisition documents for the purchase of the right-of-way, managed survey crews, for acquisition surveys, topographic surveys and route staking for clearing purposes of the Plant Sweat to Vimville transmission line to service Plant Ratcliffe.

Professional Surveyor, United States 49 Wiggins Corridor, Stone County, Mississippi
Professional Surveyor for the United States Highway 49 and Hall Street intersection. Prepared a boundary survey to establish the Highway 49 right-of-way and a topographic survey of the intersection, including adjacent roadway for design purposes.

Professional Surveyor, Coahoma County Board of Supervisors, Coahoma County, Mississippi
Professional Surveyor responsible for the coordination of survey crews and field work for the topographic survey to cover the route of the proposed bike trail for design purposes.



Joey Nelson

Education

Applied Science in Surveying
Odessa College, Odessa, Texas

Pre-Engineering
South Plains College, Levelland, Texas

Professional History

Level II Draftsman <i>Tice Engineering Incorporated, Wiggins, Mississippi</i>	June 2015 - present
Senior CADTech, Crew Chief, and Head of Surveying Department <i>AMD Engineering, LLC, Lubbock, Texas</i>	April 2013 - May 2015
Head Draftsman <i>Abacus Engineering Surveying, Lubbock, Texas</i>	February 2001 - April 2013
Part-Time Draftsman <i>AMD Engineering, LLC, Lubbock, Texas</i>	January 2009 - May 2009

Professional Experience

Level II Draftsman, Tice Engineering Incorporated, Mississippi
Drafting boundary surveys, topographic surveys, improvement surveys, and calculating points for construction staking.

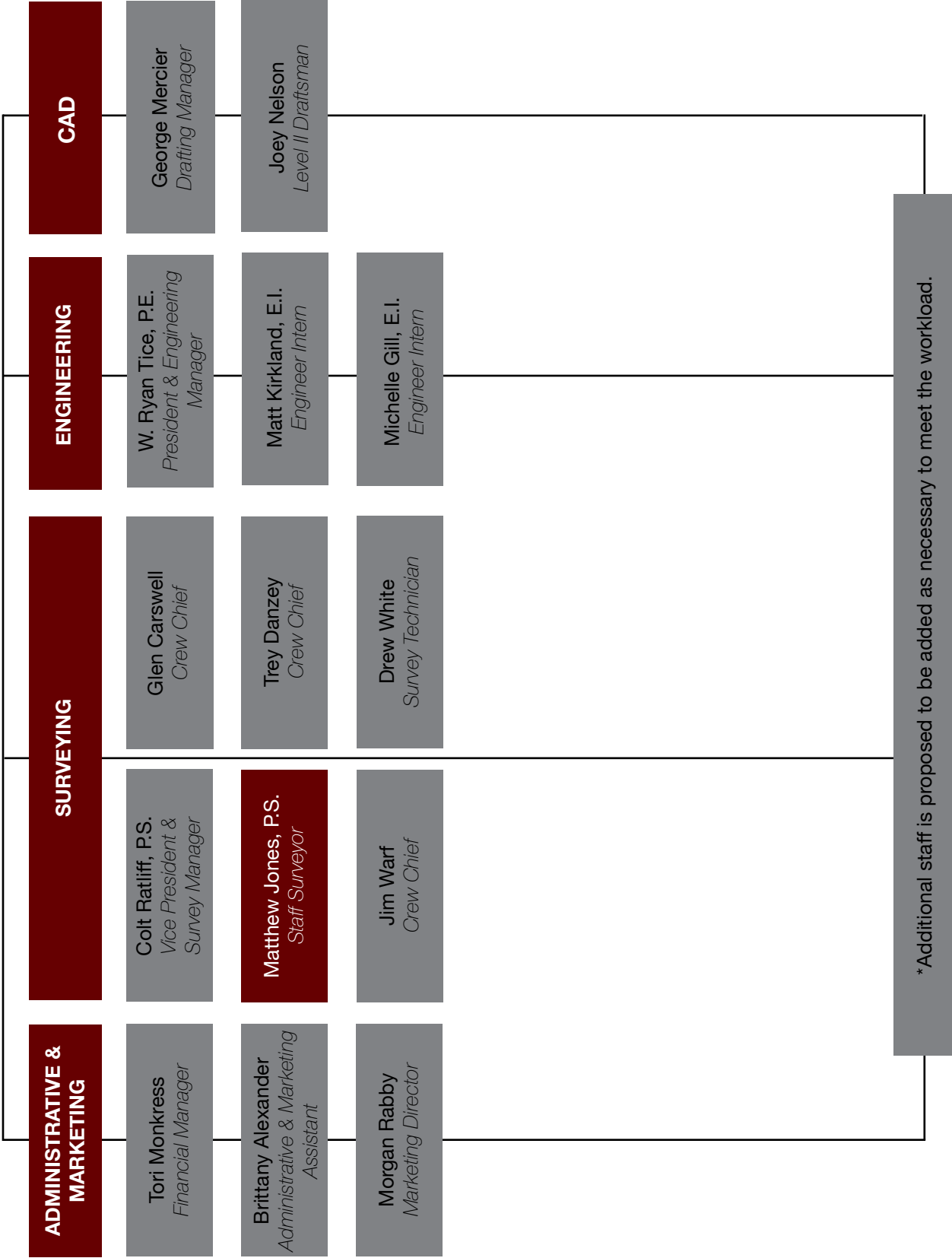
Senior CADTech, Crew Chief, Head of Surveying Department, AMD Engineering, Texas
Drafted submission plats, commercial plats, improvement surveys, topographic surveys metes and bounds, and lot survey flood certifications. Typed legal descriptions, lot survey flood certifications, elevation surveys, field notes for metes and bounds, proposals for all surveying jobs, and invoicing surveying jobs. Crew chief for surveying jobs; met with clients, organized field crews on daily work, and scheduled work load for survey crews. Interviewed potential employees and corresponded with owner regarding pay increases.

Head Draftsman, Abacus Engineering Surveying, Texas
Drafted for final survey of houses, apartments, businesses, farm land, final plats, water lines, sewer lines, and streets. Typed legal descriptions, metes and bounds, survey certifications, cost estimate on jobs, and final cost for water, sewer, and paving plans. Maintained organization of final surveys, plats and lot surveys in alphabetic and numeric order. Delivered surveys to various title companies, banks, and lenders. Worked in field for three years as chainman; located property corners, drew houses and other buildings, laid out water and sewer lines, and staked out streets for paving.

Part-Time Draftsman, AMD Engineering, Texas
Drafted for paving layouts, curb layouts, and spot elevation surveys.

Program and Instrument Experience

AutoCAD 2006-2014	Civil 3D 2013
Carlson Survey	Eagle Point
Corpscon	Auto Desk Map
Spectrum Survey	Carlson X Port
Microsoft Active Sync	Microsoft Word
Microsoft Excel	GPS (Hyper V, Spectram and Leica)
Total Station	Robot
Level rod and gun	Dap, ranger, jet, and allegro



Matthew Jones, P.S.

Registration

Professional Surveyor:
Mississippi License Number 25130

Education

Associate in Applied Science in
Drafting and Design Technology
Mississippi Gulf Coast Community College 2000

Professional History

Professional Surveyor <i>Tice Engineering Incorporated, Wiggins, Mississippi</i>	January 2014 - present
Survey Intern <i>Tice Engineering Incorporated, Wiggins, Mississippi</i>	June 2012 - December 2013
Survey Intern <i>Knesal Engineering Services Incorporated, Gulfport, Mississippi</i>	June 2009 - June 2012
Survey Crew Chief <i>Knesal Engineering Services Incorporated, Gulfport, Mississippi</i>	April 2008 - June 2009
Project Engineer <i>Helix Electric Incorporated, San Diego, California</i>	September 2004 - March 2008
Draftsman <i>Knesal Engineering Services Incorporated, Gulfport, Mississippi</i>	August 2003 - August 2004
Project Engineer <i>Helix Electric Incorporated, Biloxi, Mississippi</i>	March 2000 - September 2002

Professional Experience

Harrison County Utility Authority, Harrison County, Mississippi
Performed acquisition surveys of parcels for utility lines and topographic surveys of multiple routes for design of new sewer and water lines.

Pickering Firm Incorporated, Biloxi, Mississippi
Prepared and performed necessary field work for the topographic survey of approximately two miles consisting of Woolmarket Road from Shriners Boulevard to Lorraine Road and several side roads along the route of the City of Biloxi Sanitary Sewer Expansion project.

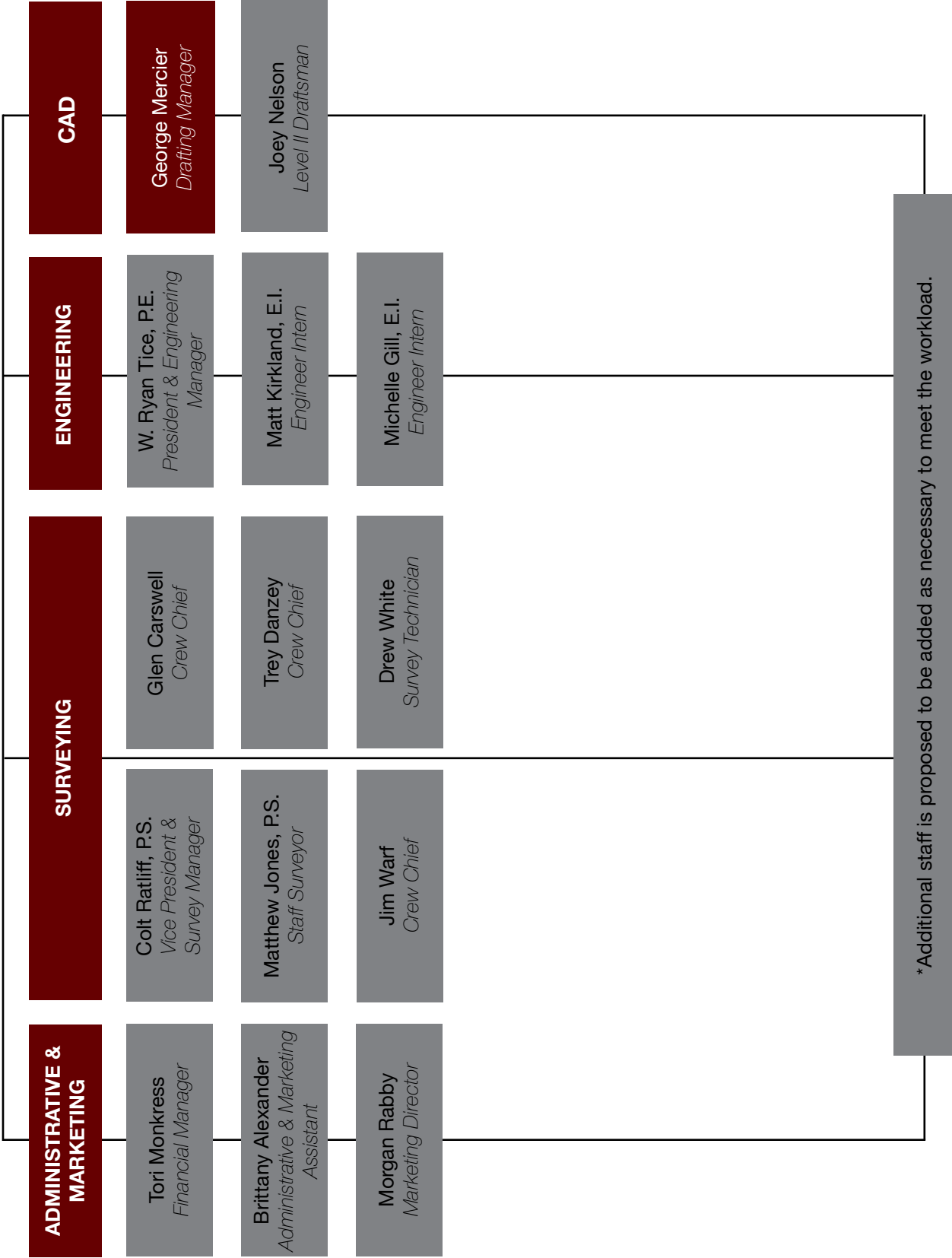
Coahoma County Board of Supervisors, Coahoma County, Mississippi
Performed a two-mile topographic survey for the design of the Historic Yazoo Pass Bike Trail.

Coahoma County Board of Supervisors, Coahoma County, Mississippi
Performed a topographic and hydrographic survey for the design of Moon Lake Scenic Overview.

United States Highway 49 Corridor, Stone County, Mississippi
Prepared and performed all necessary field work for the topographic survey to be used for the design of improvements to the intersection of Highway 49 and Hall Street.

Mississippi Power Company, Petal and Wiggins, Mississippi
Prepared and performed field work for a one-mile topographic survey of existing transmission line for rebuilding purposes.

Prepared and performed field work for a one-mile aerial and topographic survey of existing transmission line for a pole replacement.



George Mercier

Education	Associate in Applied Science in Drafting and Design Technology <i>Northwest Mississippi Gulf Coast Community College</i>	1992
Professional History	CAD Manager <i>Tice Engineering Incorporated, Wiggins, Mississippi</i>	January 2014 - present
	Draftsman / Designer <i>Knesal Engineering Services Incorporated, Gulfport, Mississippi</i>	April 2003 - January 2014
	Draftsman <i>Diversitech Incorporated, Stennis Space Center, Mississippi</i>	January 2012 - December 2012
	Draftsman / Survey Chief <i>Knesal Engineering Services Incorporated, Gulfport, Mississippi</i>	October 2008 - December 2011
	Project Manager / Designer <i>Tellus Development, LTD., Gulfport, Mississippi</i>	September 2006 - October 2008
	Draftsman <i>Knesal Engineering Services Incorporated, Gulfport, Mississippi</i>	October 2005 - September 2006
	Draftsman / CNC Programmer / Plant Engineer <i>Warren Incorporated, Collins, Mississippi</i>	April 2004 - October 2005
	Survey Chief <i>Walker & Associates Incorporated, Hattiesburg, Mississippi</i>	April 2003 - April 2004
Professional Experience	<i>City of Dallas, Dallas, Texas</i> Modeled and drafted for the Tarrant Regional Water District Integrated Pipeline project. Project included providing expertise and assistance to the surface modeling in Civil 3D of several reservoirs, and associated access roads and surface drainage structures related to the project.	
	<i>Gulfport-Biloxi Regional Airport Authority, Gulfport, Mississippi</i> Designed and drafted for a road extension project at the airport complex to connect 12th Avenue to Hangar Street. Project included building demolition and utility relocation adjacent to the flight line.	
	<i>City of Gulfport, Gulfport, Mississippi</i> Designed and drafted for a mill, overlay, and re-stripe project to resurface several streets around the City of Gulfport. Project included investigation and as needed upgrading of utilities under the street prior to resurfacing.	
	<i>Coahoma County Board of Supervisors, Coahoma County, Mississippi</i> Designed and drafted a two-mile pedestrian pathway along the Historic Yazoo Pass Waterway.	
	<i>Harrison County, Gulfport, Mississippi</i> Designed and drafted for a project that provided the civil design and drafting for the construction of a new multilevel parking garage for the Harrison County Courthouse.	
	<i>Tellus Development, LTD., Austin, Texas</i> Provided project management and coordination for the developer of the Marquis Ranch Self Storage-Austin Site. This project was on a site that involved the protection of several "critical environmental features" and treatment of surface water runoff.	



Matthew Kirkland, E.I.

Education	Bachelor of Science in Civil and Environmental Engineering <i>Mississippi State University</i>	2012
Professional Affiliations	Registered Engineer-in-Training (EIT) with state of Mississippi Mississippi Engineering Society (MES) Structural Engineers Association of Mississippi (SEaOMS), Membership/Programs Committee Operations Officer (XO) for 287 th Engineering Company (MAC) out of Lucedale, Mississippi	
Professional History	Bridge Design Engineer <i>Mississippi Department of Transportation Jackson, Mississippi</i>	August 2012 - February 2015
	Survey Technician <i>W Engineering Wiggins, Mississippi</i>	May 2007 - May 2009
Military Experience	Reconnaissance Officer <i>S-3 (Operations), 890th Engineering Battalion</i>	February 2014 - Present
	Detachment Commander <i>251st EN DET (Horizontal), Lumberton, Mississippi</i>	August 2012 - January 2014
Professional Experience	<p><i>Bridge Design Engineer, Mississippi Department of Transportation (MDOT), Jackson, Mississippi</i> Responsible for layout, structural design, and creation of prestressed concrete and steel plate girder bridge plans, planned and organized bridge repairs using existing plans and modern construction techniques, performed detailed structural analysis of all bridge components as well as data analysis on past projects to minimize future costs, and regularly collaborated with contractors to assess as-built condition of structures and provide design guidance for revisions.</p> <p><i>Survey Technician, W Engineering, Wiggins, Mississippi</i> Reviewed plats, assisted in boundary and construction surveys, performed cost analysis and assisted in designs, and assisted in geotechnical applications; geotechnical surveys, borings, testing, foundation plans, etc.</p> <p><i>Reconnaissance Officer, S-3 (Operations), 890th Engineering Battalion</i> Responsible for project design and plans production for a wide array of engineering products across the state, routinely serve as QA/QC Officer for the Battalion, and responsible for the overall outcome of all construction projects.</p> <p><i>Detachment Commander, 251st EN DET (Horizontal), Lumberton, Mississippi</i> Responsible for the training and supervision of 42 soldiers and the maintenance of over \$3 million of engineer equipment, served as Project Manager for a variety of assigned horizontal construction missions, and served as Executive Officer during Hurricane Isaac Operations, directly responsible for locating and evacuating over 100 flood victims.</p>	



Michelle Gill, E.I.

Education

Bachelor of Science in
Biological Engineering 2004
Mississippi State University

Professional Affiliations

Registered Engineer-in-Training (EIT) with state of Mississippi
Solid Waste Association of North America (SWANA)
Southeastern Stormwater Association (SESWA)

Professional Experience

Project Manager, MDOT - Roadway Safety Audit for U.S. Highway 45, Clarke and Wayne Counties, Mississippi (2015)

Project Manager for a Roadway Safety Audit (RSA) along Highway 45 in Clarke and Wayne Counties, Mississippi. The project will include analysis of crash data, accident reports, traffic studies, and site visits to develop safety improvements along the roadway. Safety improvements recommendations will be reviewed and implemented by the Mississippi Department of Transportation (MDOT), as funding permits, to prevent future crashes in areas identified by the Roadway Safety Audit.

City of Hattiesburg - Wastewater Treatment Facility, Hattiesburg, Mississippi (2010-2015)

Assisted the City of Hattiesburg in development of wastewater treatment alternatives, including land application, polishing and mechanical treatment. Presentation of these alternatives to the public through a series of six public ward meetings and through city council and city-wide meetings. Transitioned from treatment alternatives review to conceptual design into final design. This project required continued coordination with team members in different states and working with different companies. Continued communications with the city has been a vital component of this project.

Stone County Utility Authority - South Stone County Water Transmission System (W10), Wiggins Regional Wastewater Transmission System (S8), and South Stone County Wastewater Transmission System (S9), Stone County, Mississippi (2007-2015)

This grant-funded project includes the creation of backbone infrastructure for Stone County water and sewer services. Participation and project coordination for the water project included design and construction of approximately 14 miles of water line, three 250-gallon water tanks and three 500-gpm wells. The W10 project included railroad permitting at two locations with the Kansas City Southern (KCS) railroad company. The S8 and S9 projects included coordination for the design and construction of approximately 16 miles of sewer line, eight (8) stations, a 0.75 MGD UV disinfection wastewater treatment plant, and a 1.0 MGD drpi field wastewater treatment plant.

Project Manager, Phase II Stormwater Program, City of Hattiesburg, Mississippi (2006-2015)

Project Manager for eight (8) years. This project provides annual assistance to the City of Hattiesburg for the implementation of their Phase II Stormwater Program. Neel-Schaffer has been working with the city for eleven (11) years helping design and implement two consecutive five-year programs. This project consists of developing protocols and standard operating procedures in coordination with city personnel, conducting training sessions, coordinating task assignments and schedules to meet program requirements, and working with the city to coordinate public events that fulfill program requirements.

Drainage Improvements, City of Pass Christian, Mississippi

Participation in the design of the drainage improvements between Market Street and Davis Avenue in Pass Christian, Mississippi. This project required the submission and approval of multiple railroad permits with CSX railroad, coordination with the Army Corps of Engineers in wetland areas, and coordination with the Department of Marine Resources since the project was being constructed in a coastal community.

Mississippi Emergency Management Agency (MEMA), Mississippi State Enhanced State Mitigation Plan

Worked in coordination with other team members to write and receive approval for an Enhanced State Mitigation Plan for the state of Mississippi. The plan is instrumental to emergency preparedness and increased the state's eligibility for federal funding after disaster events. The plan identified all natural and man-made disasters that have occurred or had the potential to occur in the state of Mississippi. Completion of the plan required cooperation on all levels of federal, state, and local government to gather disaster data and identify resources throughout the state.

Joel Miles

Mayor

City of Wiggins
117 North First Street
Wiggins, Mississippi 39577
(601) 928-7221

Daniel Vassel

County Administrator

Coahoma County
Post Office Box 579
Clarksdale, Mississippi 38614
(601) 928-4121

Chad Pulliam

Transmission Engineer

Mississippi Power Company
Storm and Outage Center
Gulfport, Mississippi 39501
(228) 539-7612

Angie Meadows

Stone County Utility Authority

312 A Mill Avenue
Wiggins, Mississippi 39577
(601) 928-2224

Tice Engineering Incorporated
510 South Vardaman Street
Wiggins, MS 39577
601.928.4121

ryan.tice@ticeeng.com
www.ticeeng.com
Contact Representative:
W. Ryan Tice, P.E.



Profile

Company Profile Tice Engineering Incorporated

Be with a company that focuses on building relationships. Find out what is the difference between us and our market competitors.

Prepared for:

General Distribution

Date Issued:
09.01.2015

Statement of Confidentiality:

This proposal and supporting materials contain confidential and proprietary business information of Tice Engineering Incorporated. These materials may be printed or photocopied for use in evaluating the proposal project, but are not to be shared with other parties.